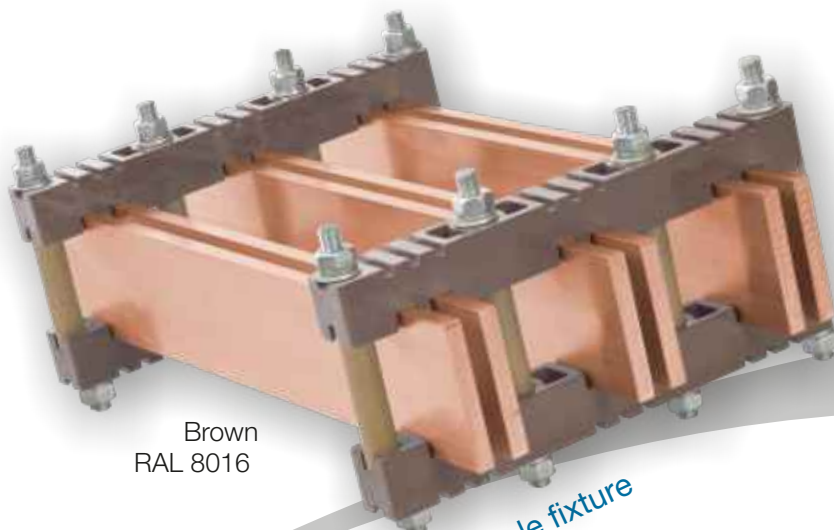


2 and 4 hole fixture

Brown
RAL 8016

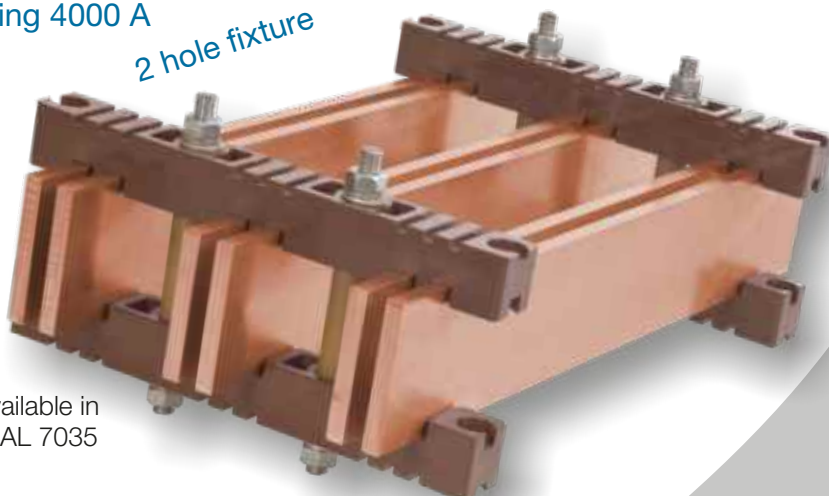
4 hole fixture

Article number	Colour
010100	Brown
010200	Grey

Type-tested in accordance with DIN EN 61439-1
(VDE 0660-600-1): 2012-06, EN 61439-1:2011

- Operational alternating current 1000 Volt
- Continuous current exceeding 4000 A
- Phase interval 100 mm

2 hole fixture

also available in
Grey RAL 7035

Raw material properties

- Fibreglass reinforced polyester resin (UPR)
- DIN-Typ 803 (self-extinguishing)
- Colour: Brown or light Grey (additional colours available on request)
- Temperature range: between -40 and +130 °C

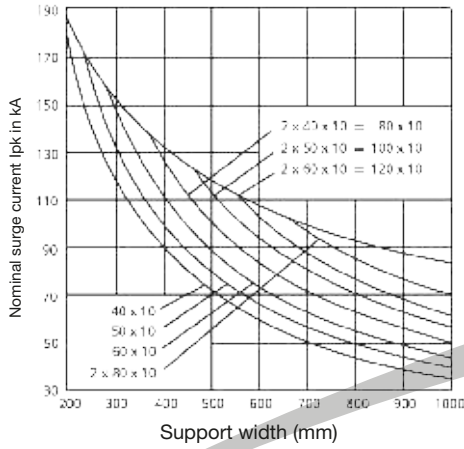
Dimensional stability HDT-A	ISO 75	°C	>250
Gross density	ISO 1183	g/cm ³	1,75
Fire behavior	UL 94	class	V0 at 3,2 mm
Special volume resistivity	IEC 60093	Ohm cm	10 ¹⁴
Surface resistance	IEC 60093	Ohm	10 ¹²
Dielectric strength (1 mm)	IEC 60243	kV/mm	20
Creep resistance	IEC 60112	CTI	600

(additional data available on request)

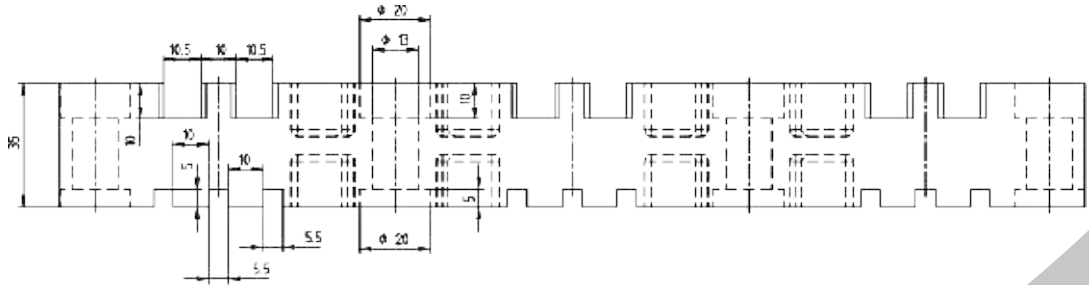
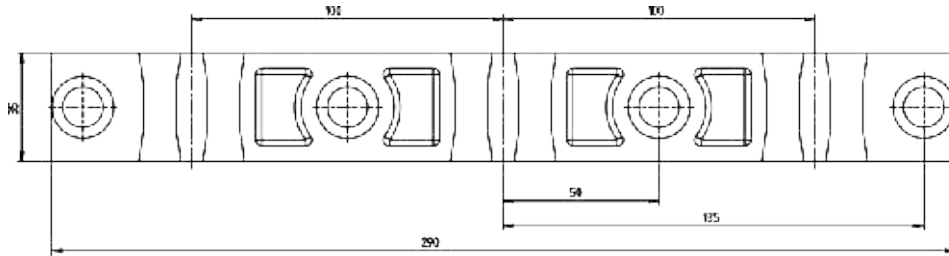
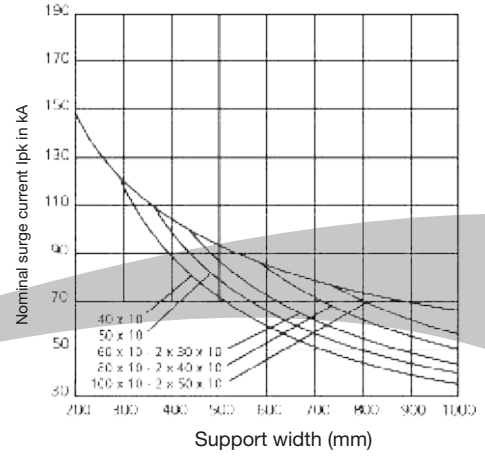
The data given are subject to certain tolerances affected by manufacturing processes as well as the inserted pre-products. That is why these figures are average values, i.e. non-binding standard values which cannot be used to derive a guarantee claim from. We reserve the right to make changes!

2 and 4 hole fixture

Short-circuit resistance of SH 100
Four-hole fixture



Short-circuit resistance of SH 100
Two-hole fixture



Height x Thickness mm	Continuous current in A ~ up 60 Hz			Cross section mm ²	Weight kg/m
	Number of busbars				
	1	2	3		
20 x 5	320	590	810	99	0,88
30 x 5	445	790	1050	149	1,33
40 x 5	565	980	1280	199	1,77
50 x 5	685	1170	1475	249	2,22
20 x 10	500	965		199	1,77
30 x 10	670	1240		299	2,66
40 x 10	840	1510		399	3,55
50 x 10	1000	1770		499	4,44
60 x 10	1155	2015		599	5,33
80 x 10	1450	2470		799	7,11
100 x 10	1745	2900		999	8,89
120 x 10	2035	3350		1200	10,70
160 x 10	2700	4350		1600	14,20