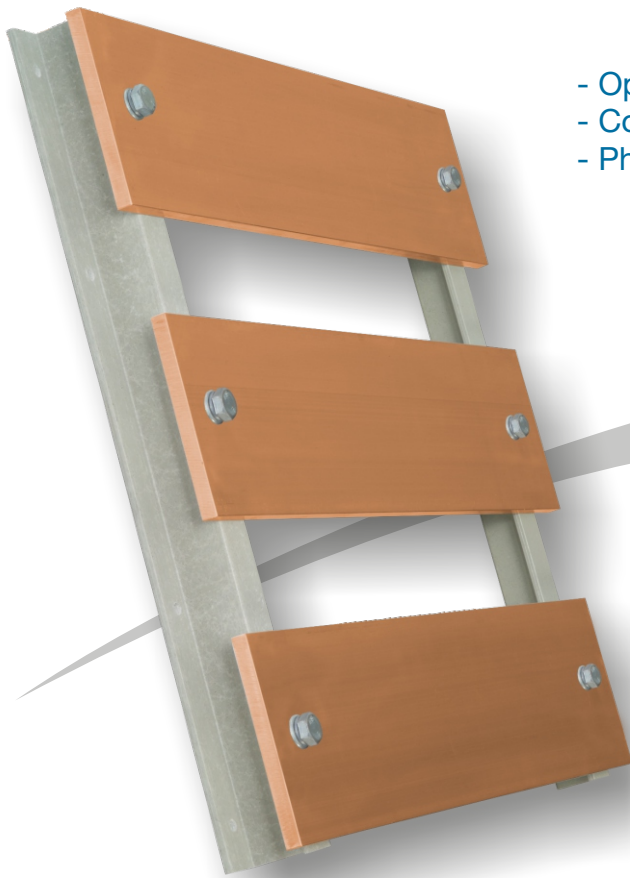


Z 185/1

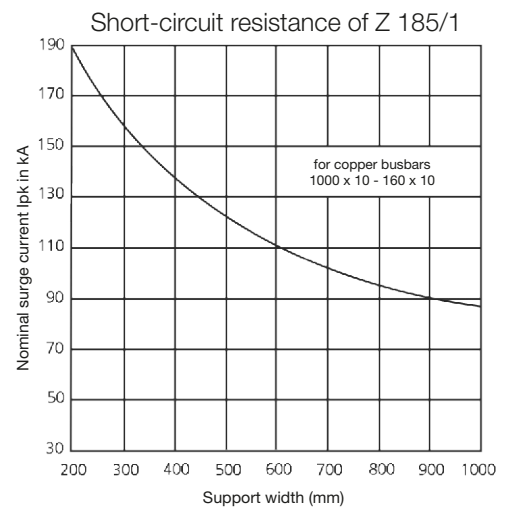
Busbar supports made of duroplast



- Operational alternating current 1000 V
- Continuous current exceeding 4000 A
- Phase interval 185 mm

Article number	Colour
011400	Grey

Dual busbars with extension blocks!
For lying busbars, 10 mm thick, made of E-Cu F30 bare. Based on DIN 43671, the table contains the continuous currents for 35°C air and 75°C busbar temperature, owing to the very heat-resistant carrier material.



Height x Thickness mm	Continuous current in A up to 60 Hz		Cross section mm ²	Weight kg/m
	Number of busbars			
	1	2		
30 x 10	670	1240	299	2,66
40 x 10	840	1510	399	3,55
50 x 10	1000	1770	499	4,44
60 x 10	1155	2015	599	5,33
80 x 10	1450	2470	799	7,11
100 x 10	1745	2900	999	8,89
120 x 10	2035	3350	1200	10,70
160 x 10	2700	4350	1600	14,20

Raw material properties

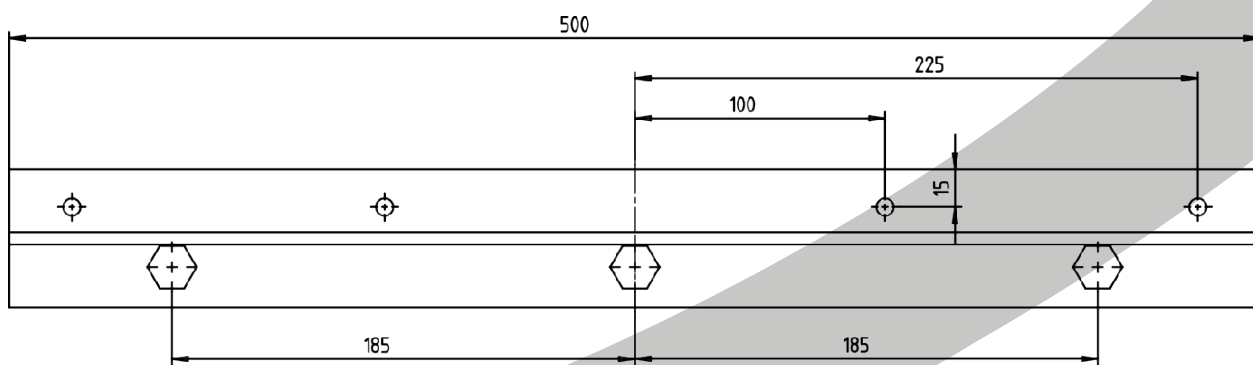
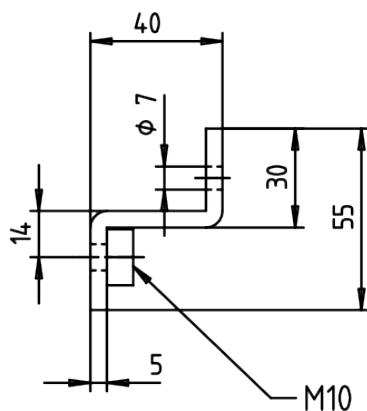
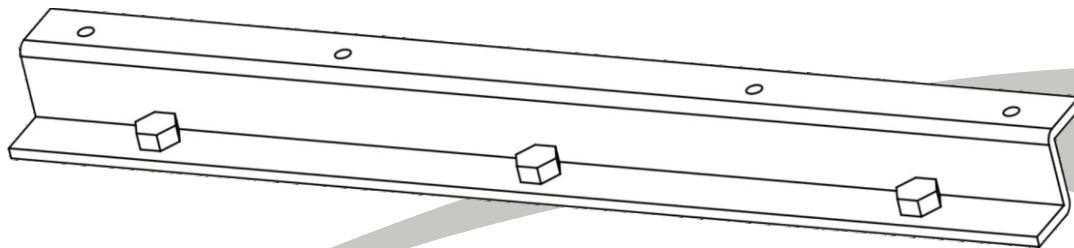
Thermal dimensional stability acc. to Martens	DIN 53462	°C	>150
Density	ISO 1183	g/cm ³	1,75
Fire behaviour	UL 94	class	HB
Specific contact resistance	IEC 60093	Ohm cm	10 ¹²
Dielectric strength (90°C vertical)	IEC 60243	kV/3 mm	14
Creep resistance	IEC 60112	CTI	600
Halogens	None (Beilstein's test)		

(additional data available on request)

The data given are subject to certain tolerances affected by manufacturing processes as well as the inserted pre-products. That is why these figures are average values, i.e. non-binding standard values which cannot be used to derive a guarantee claim from. We reserve the right to make changes!

Z 185/1

Busbar supports made of duroplast



The data given are subject to certain tolerances affected by manufacturing processes as well as the inserted pre-products. That is why these figures are average values, i.e. non-binding standard values which cannot be used to derive a guarantee claim from. We reserve the right to make changes!